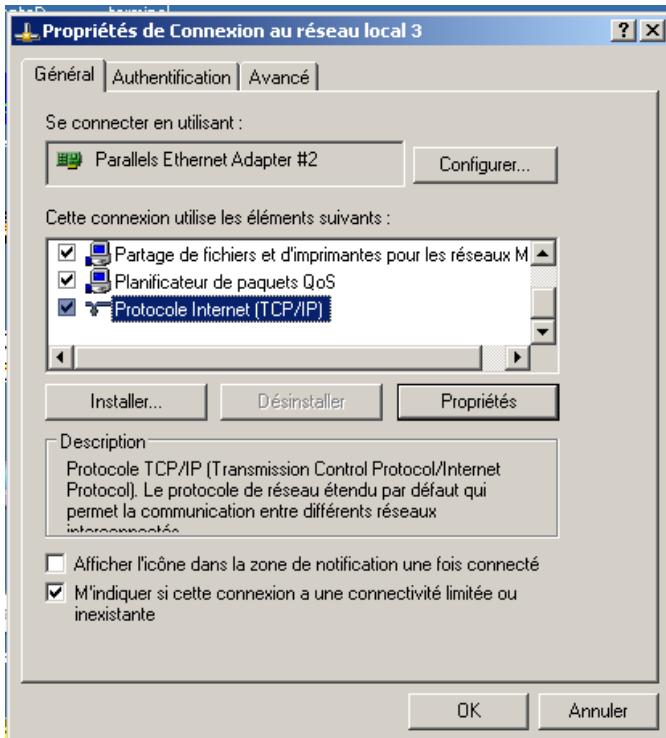
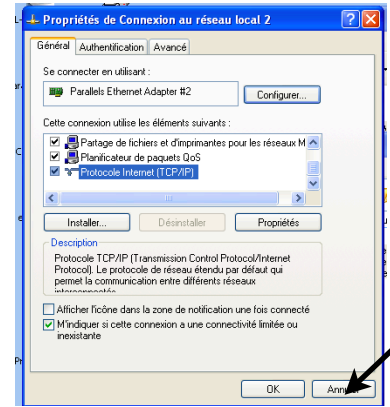
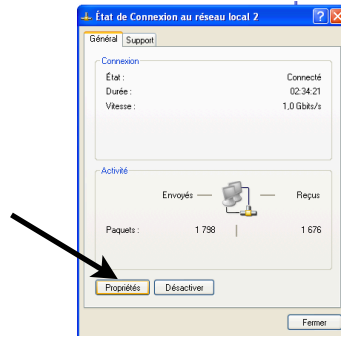
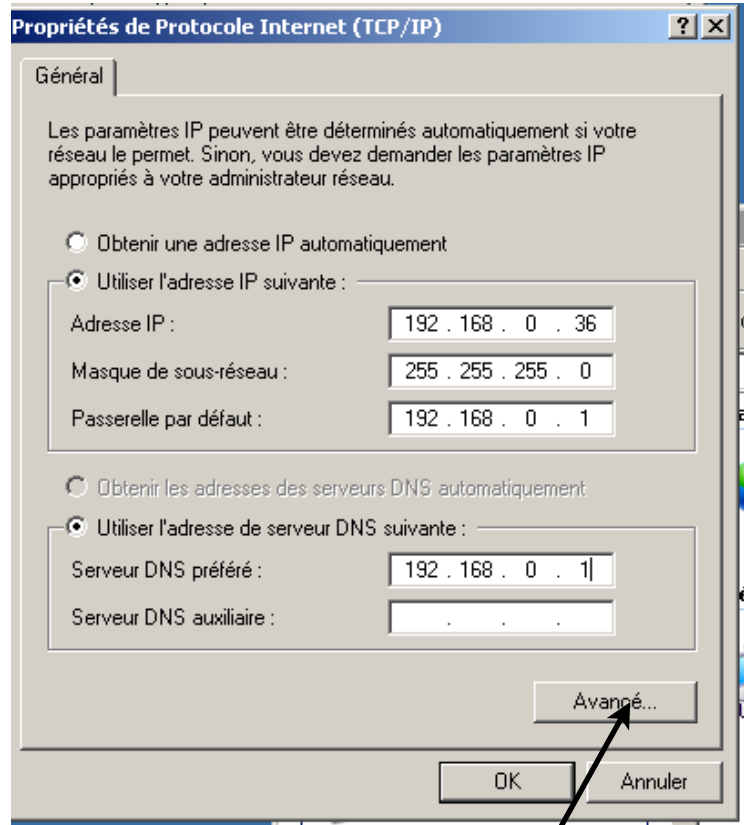


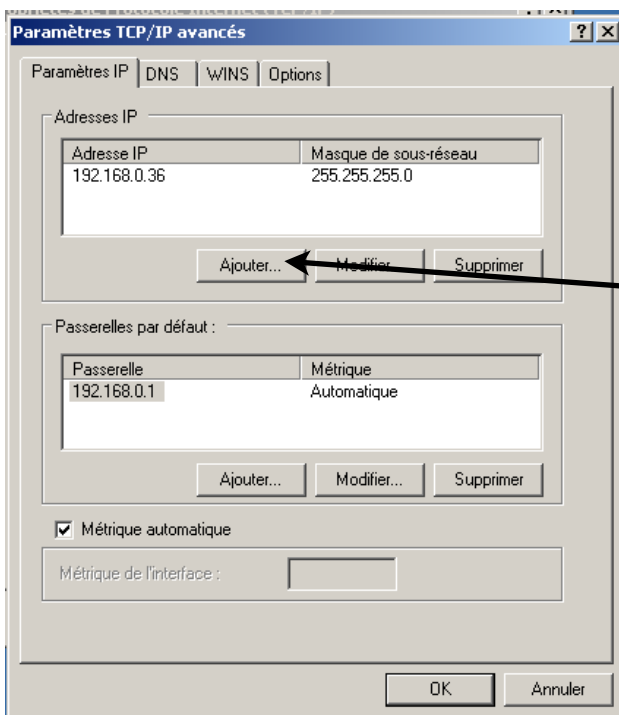
TUTO Connecter 2 réseaux



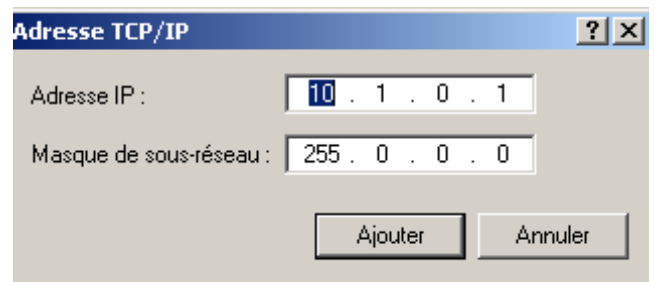
Dans Propriétés connexion
Choisir Protocole internet (TCP/IP)



Remplir comme ci-dessus
Et cliquer sur Avancé..

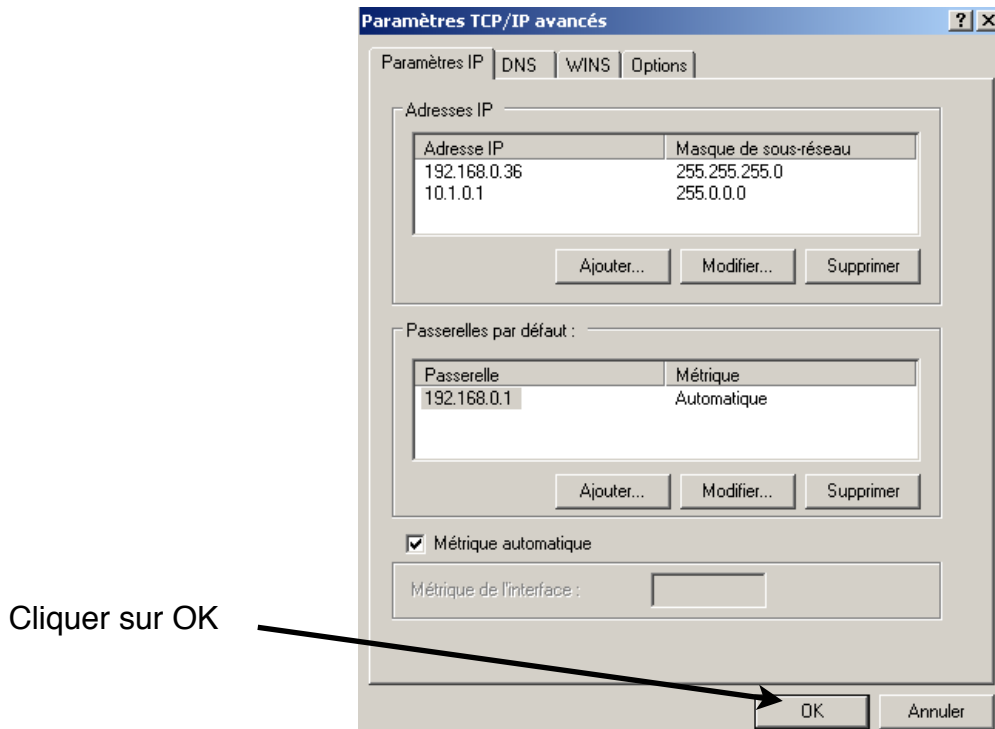


Cliquer sur Ajouter

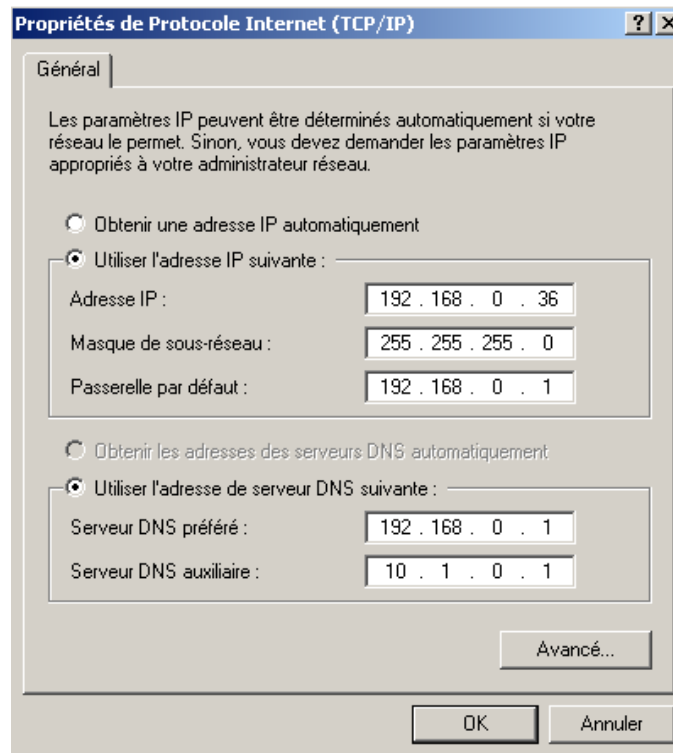


Remplir comme ci-dessus

TUTO Connecter 2 réseaux



Remplir comme ci-dessus
Serveur DNS auxiliaire
Et cliquer sur OK



SREI

Société de Recherche en Electronique Industrielle

2 Rue du canal
21470 Brazey en plaine

[Accueil](#)